



DICKY-JOHN GAC®2500-UGMA PRODUCT CALIBRATION DOWNLOAD

Product calibration files are located at the DICKY-john website for loading to the GAC® 2500-UGMA Grain Moisture Analyzer.

If a USB memory device with preloaded calibration files is already in your possession, proceed to the "Load Calibrations to GAC2500-UGMA" section.

IMPORTANT: Before downloading calibrations verify the USB memory device is 2-4 GB and formatted as FAT and NOT FAT32. See "Formatting USB Memory Device" section for formatting instructions.

DOWNLOAD CALIBRATIONS FROM WEBSITE

To download calibrations to a USB memory device:

1. Visit the DICKY-john Calibration website at <http://cal.dickey-john.com/Calibrations.aspx>
2. Insert USB memory device into computer's USB drive.
 - Remove all existing files from USB memory device.
3. From the instrument dropdown in the top left hand corner, choose "GAC2500."
4. Click on "GAC2500 Calibration Bundles" button on the left side of the page for the bundle options to be displayed.
5. Click on the bundle you wish to download.
 - Product calibration files are saved in a zip format and require extraction before loading to the GAC® 2500 instrument.
6. Copy all extracted files or desired individual files and paste into the root directory of the USB memory device.
7. Wait for files to finish copying and remove USB memory device.

NOTE: Root directory (such as F:/) is the first directory that shows when opening a drive. If having issues locating the root directory, go to "Start/My Computer" and open the USB memory device.

IMPORTANT: Steps to download calibrations vary based on the software installed on the instrument. Check the software version of the instrument for the proper steps to follow in this instruction.

VERIFY INSTRUMENT SOFTWARE VERSION

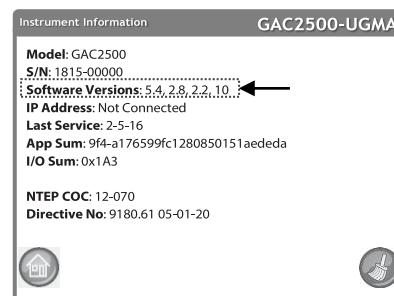
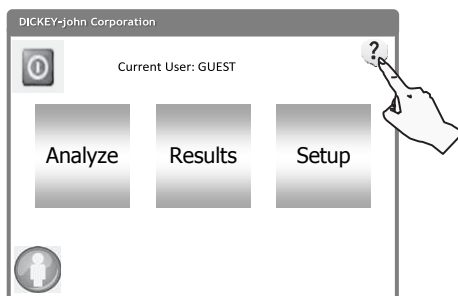
1. At the Main Menu of the GAC® 2500, press the **Information** button. Follow the appropriate instructions below based on software version installed.

Figure 1

Information Screen



Information Button





LOAD CALIBRATIONS TO GAC® 2500-UGMA

SOFTWARE VERSION 5.4:

IMPORTANT: Any custom calibrations on the instrument should be saved to a USB memory device before starting the installation.

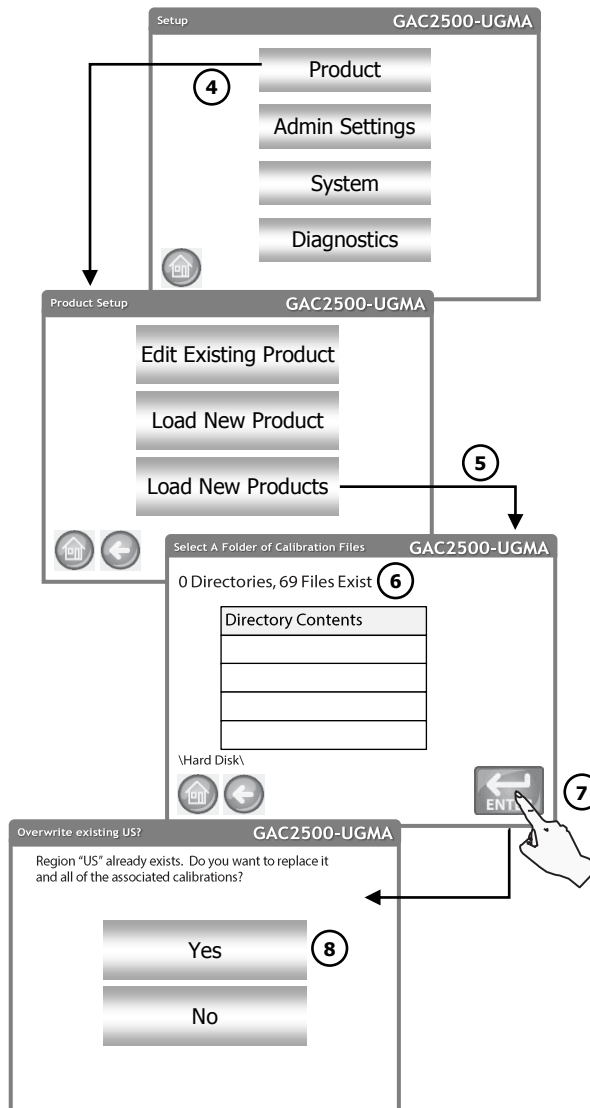
1. Insert the USB device into the instrument.
2. At the Main Menu screen, press the **Setup** button.
3. Enter the user name and password and press the **Enter** button.
4. Save any custom calibrations that currently on the instrument. Unsaved calibrations will be deleted upon installing new calibration package.
5. At the Setup menu, press the **Product** button.
6. At the Product Setup screen, press the **Load New Products** button.
7. The next screen displays the number of files that exist on the USB memory device.
8. Press the **Enter** button.
9. Press “Yes” to begin installation of new files. Old products are removed (including custom calibrations).
 - Refer to “*Reloading Custom Calibrations*” section for re-installing custom calibrations.

PRODUCT INSTALLATION INSTRUCTIONS



Figure 2

Loading Calibrations with Software Version 5.4



Home Button



Information Button

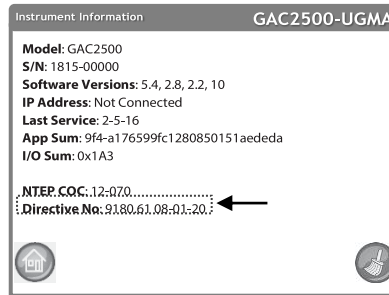
10. Remove the USB device from the instrument.
11. After loading calibrations, the Product Setup screen displays. Press the **Home** button to return to the Main Menu.
12. At the Main Menu, cycle power.
13. After power up, press the **Information** button to verify that "05-01-19" displays as the new date at the Directive No, shown in Figure 3, as a good calibration install.

PRODUCT INSTALLATION INSTRUCTIONS

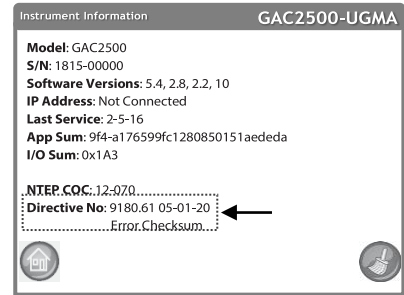


Figure 3

Information Screen



Good calibration install



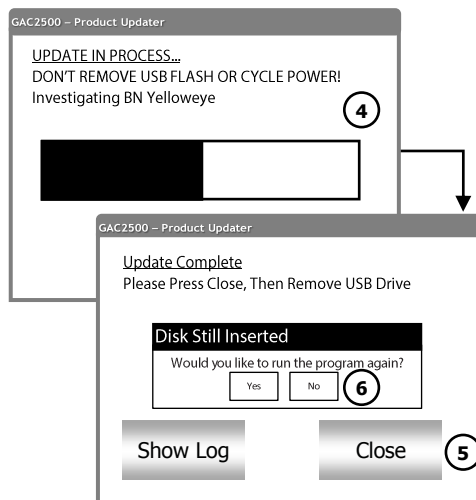
Before power cycle. Turn off instrument and then turn on. Screen should update with a good calibration install.

SOFTWARE VERSION 5.1 OR BELOW

1. Power OFF the GAC® 2500-UGMA.
2. Insert the USB memory device into the GAC® 2500-UGMA USB port located on the front panel.
3. Power on instrument.
4. Files will automatically begin loading onto the instrument. The program will back up all existing calibration files and install the new ones.
5. Press the **Close** button to exit.
6. When update is complete, press 'No' to avoid running the program again.

Figure 4

Product Updater



7. Remove the flash drive and the instrument continues to power up.
8. Once the machine is powered on, custom calibrations that were not included in the updater package can be restored by navigating to the backup directory on the flash drive named <machine serial number>_OldCals_<date(yyyyMMdd)>_<time(HH:mm)>. These calibrations can be reloaded from the Setup menu.



RELOADING CUSTOM CALIBRATIONS TO GAC 2500-UGMA

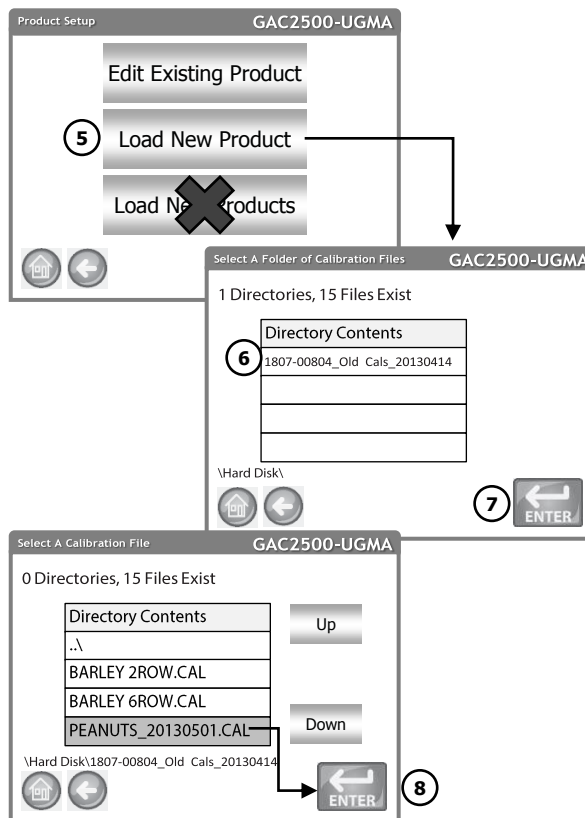
1. Insert USB memory device into the GAC 2500-UGMA USB port located on the front panel.
2. At the Main Menu screen, press the **Setup** button.
3. Enter the Name and Password, if required, or press **Enter** to proceed.
4. At the Setup screen, press the **Product** button.
5. At the Product Setup screen, press the **Load New Product** button. **Do not use the Load New Products button to reload custom calibrations.**

NOTE: The USB memory device must be inserted into the instrument to display the Load New Product button.

6. To load a single product, press the directory contents file to highlight.
7. Press the **Enter** button to open the directory.
8. In the Directory Contents window, press the custom calibration to highlight and **press** the Enter button.

Figure 5

Re-Load Custom Calibration





NOTE: USB memory device should have 2-4 GB of storage capacity.

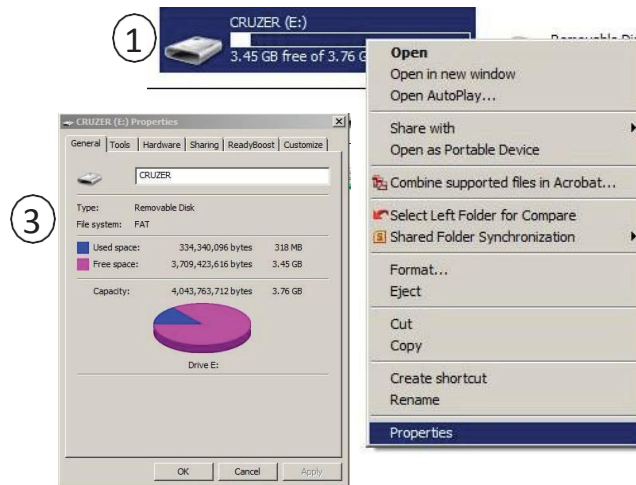
FORMATTING A USB MEMORY DEVICE

To verify a memory device is FAT:

1. Insert the USB memory device into the computer.
2. Navigate to “My Computer”, locate the directory for the memory device, and click “Properties”.
3. Look at the ‘File System’ type under the General Tab and verify the device is FAT.

Figure 6

Verify Formatting of USB Memory Device



Reformat memory device to FAT:

4. In “My Computer”, right click on the memory device directory.
5. Click “Format”.
6. Select “FAT” as the file system format.
7. Click “Start”. The USB memory device is now FAT formatted.

Figure 6

Formatting USB Memory Device to FAT

